

Township of Enniskillen  
**ZONING BY-LAW**  
**SCHEDULE "A"**  
**PART 1**

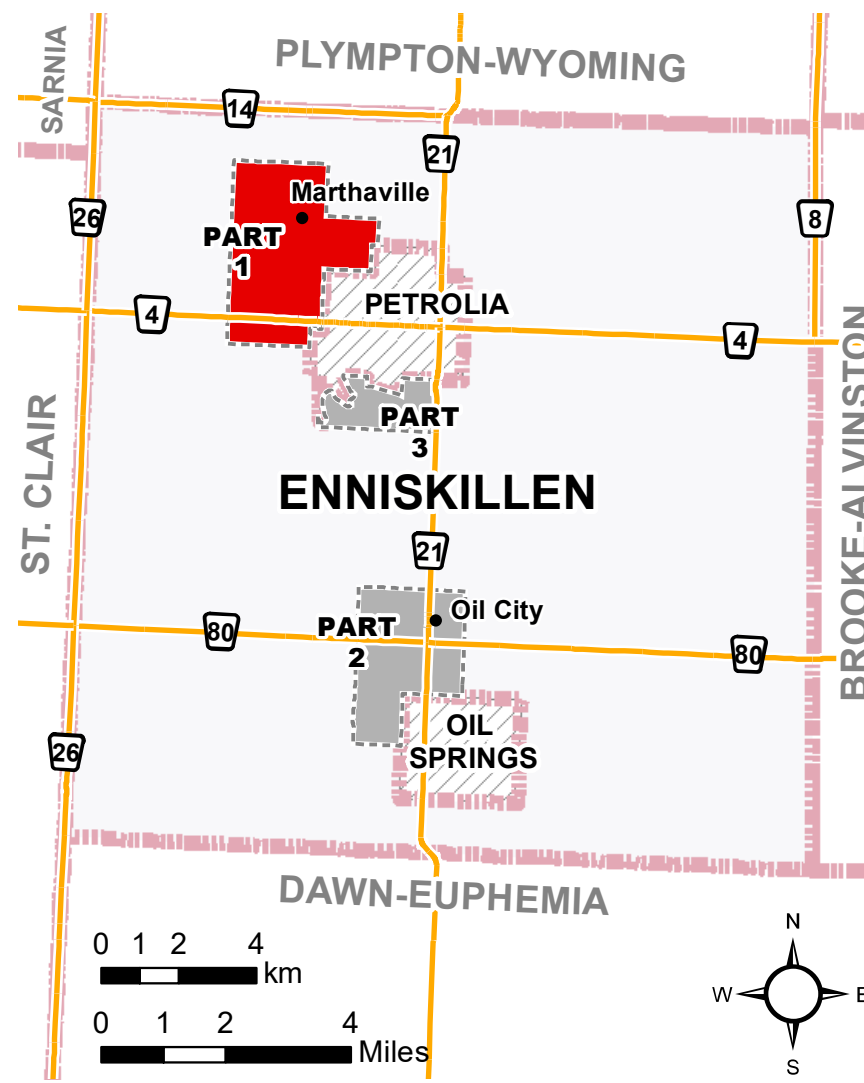
**LEGEND**

Assessment Parcels	Waterbodies
Provincial Highway	Sewage Treatment Works
County Road	Active or Former Waste Disposal Site (Anderson Dataset : Lambton GWS 2004)
Local Road	Municipal Boundary
Railroad	Schedule Inset Boundary
Rivers - Streams - Drainage	

**Zoning Index**

A1 Agricultural - 1	EP-WET (MNR - OWES)
A2 Agricultural - 2	EP-WD (LCNHS) (Significant Woodlot)
R2 Residential - 2 (Marthaville)	EP-H (Local CA)
C1 Central Commercial	
C2 Highway Commercial	
I Institutional	
M2 Light Industrial	
M3 Industrial Waste Disposal	
OS1 Passive Open Space 1	
OS2 Active Open Space 2	

\* Temporary Use ... (T1), ... (T2)  
\* Zone Exceptions ... (1), ... (2)  
\* Holding Zones ... (h), ... (h1), ... (h2)  
\* **NOTE:** For Zones with these suffixes refer to the text of the by-law for applicable zoning provisions.



**Reference**

Disclaimer: These digital mapping products have been produced on the County of Lambton's Geographic Information System. Data provided herein is derived from sources with varying levels of accuracy and currency. This is not a survey product. The County of Lambton disclaims all responsibility for the accuracy or completeness of information contained herein. The County of Lambton assumes no responsibility for errors arising from use of these digital mapping products.

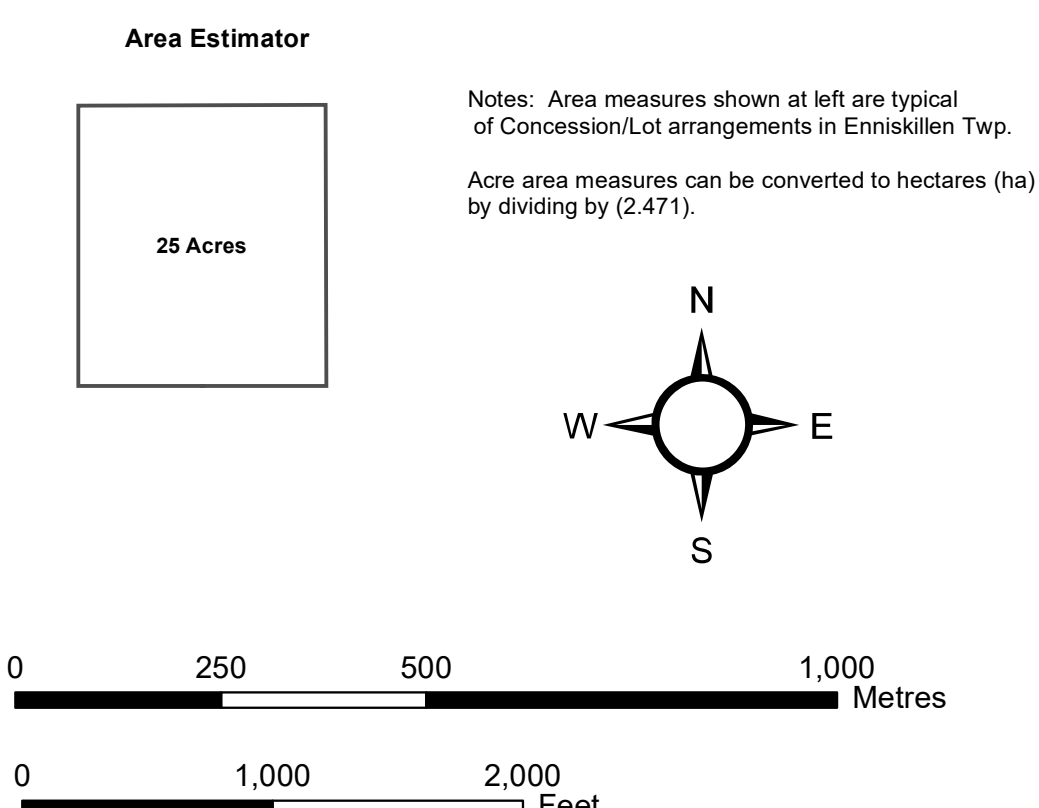
The Zoning By-law information contained herein is current as of the last recorded amendment noted under "Zoning By-law Amendments".

- Cadastral database is current to June 2013.
- Wetlands database is current to June 2014.
- Significant Woodlot database is current to April 2013.
- Hazard database is current to 2010.

Projection: UTM NAD 83 Zone 17

COUNTY OF LAMBTON  
Planning and Development Services, August 2015

[www.lambtononline.ca](http://www.lambtononline.ca)



Township of Enniskillen  
**ZONING BY-LAW**  
**SCHEDULE "A"**  
**PART 1**

to By-law No. 58 of 2015  
Passed this 22 day of September, 2015

Kevin Marriott, Mayor      Duncan McTavish, Administrator-Clerk

**Zoning By-law Amendments**

ZBA # 55, August 15, 2022



Within the EP-H Zone designation, the provisions of the EP-H Zone take precedence over those of any zone with which they may be layered except as noted in Section 4.6 d).